



INTERNATIONAL  
LANGUAGE  
ACADEMY OF CANADA

# ENGLISH IN CANADA

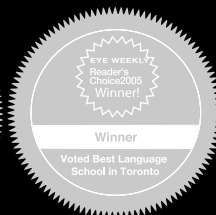
Voted #1 English Language School  
in Canada by Students & Agents

TORONTO  VANCOUVER



**LTM Lifetime Superstar Award - 5 Time Winner**  
**English Language School North America**

ILAC is the first and only school in the world  
to win the prestigious Lifetime Superstar Award



**2013**  
[www.ilac.com](http://www.ilac.com)

# Welcome to Canada!

Dear Students,

Welcome to ILAC, voted the #1 English language school in Canada by students and agents around the world. This year we are celebrating our 15<sup>th</sup> Anniversary of teaching English programs to students from over 70 different countries.

To celebrate our birthday, we have renovated our campuses and the new boutique school now consists of seven buildings in Toronto and Vancouver.

At ILAC, we are always here to provide you with the best service and experience in and outside the classroom. Our door is always open and we look forward to meeting you.

See you at ILAC!

Sincerely,



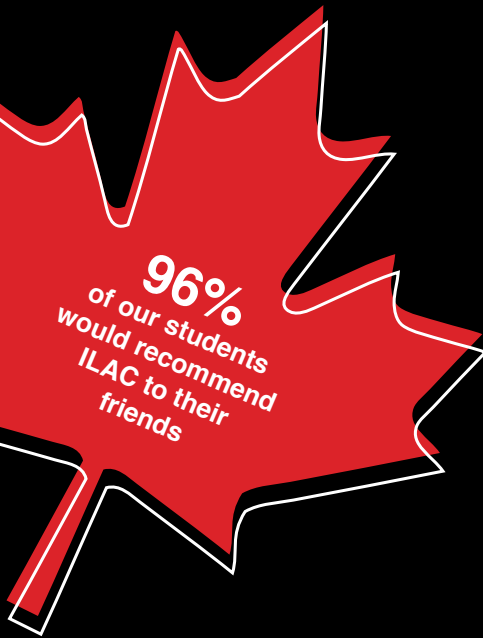
Executive Director



Executive Director  
Principal



Executive Director



Ilan Cohen  
Executive Director  
[ilan@ilac.com](mailto:ilan@ilac.com)

Jonathan Kolber  
Executive Director - Principal  
[jonathan@ilac.com](mailto:jonathan@ilac.com)

Bernardo Riveros  
Executive Director  
[bernie@ilac.com](mailto:bernie@ilac.com)

**Scan Me**

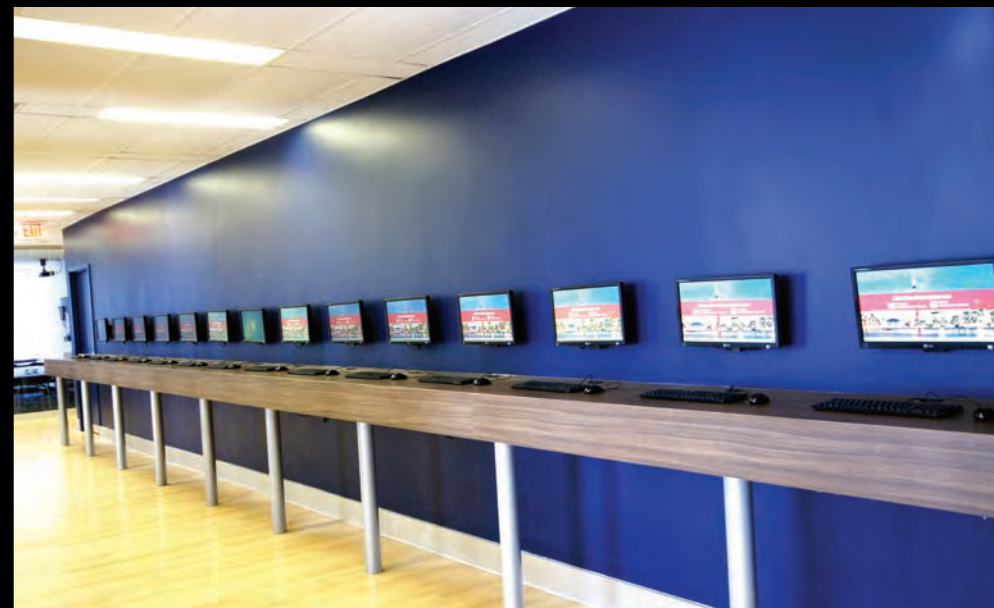
with your Smartphone  
to learn more about ILAC



# ILAC - The Boutique English Language School

ILAC's boutique schools in Toronto and Vancouver offer:

- Excellent education
- Personalized service
- Downtown location
- Modern facilities
- Open and friendly environment
- Student diversity





# LTM Lifetime Superstar Award - 5 time winner English Language School North America



Johnathan Kolber, Director of Ilac, enthused that having won the award five times was down to the hard work and dedication of his staff, teachers and students.

LTM Star English Language School North America Winner 2011 / 2010 / 2009 / 2008 / 2007

- Language Travel Magazine Star Awards



ILAC is the first and only school in the world to win the prestigious Lifetime Superstar Award, in recognition for winning the LTM Star English Language School North America award 5 years in a row.

Thanks to all our agents for supporting us for this award.

# ILAC

## The Ultimate Student Experience



# More than 10,000 Students Come to ILAC Every Year

## TABLE of CONTENTS

### Voted #1 English Language School in Canada by Students & Agents

- LTM Lifetime Superstar Award - 5 time winner - English Language School North America.....2 & 4
- LTM Star English Language School North America 2011/10/ 09/ 08/ 07.....2 & 4
- Consumer Choice Award 2012  
Best English School in Toronto.....4
- Top University Pathway Program – Top Choice Awards 2012/11/10/ 09/ 08/ 07.....4
- 50 Best Managed Companies – 2011/2010.....4
- Japan Best School Award – ILAC Vancouver 2010.....4
- Voted Best Language School in Toronto – Eye Weekly Magazine 2005.....4

### Toronto & Vancouver Campuses

- Toronto.....5
- Vancouver.....7
- Toronto Campus.....6
- Vancouver Campus.....8

### English Programs for all Ages, Levels and Purposes

- Choose Your Program ..... 12
- English Programs.....13
- Progressing Through ILAC's levels.....15-16
- General English.....17
- Exam Preparation - TOEFL, IELTS,  
Cambridge FCE & CAE.....18
- Business English.....19
- Teacher Training - TESOL.....20

### University Placement

#### **Programs**

- University Pathway Program - Pre Degree Certificate.....21
- GMAT Preparation .....23
- High School Year.....25

#### **Customized Study Plans**

- Free University Placement Services.....22
- Partner Universities & Colleges.....22

### Teacher Training

- TESOL Courses.....20

### Study & Work in Canada

- Professional Focused & Hospitality Focused..... 24

### Students from Around the World

- Student Statistics..... 9
- Facebook and ILAC Social Networks.....26

### ILAC Counsellors

- Meet the ILAC Team.....10

### Social Activities

- Toronto Activities..... 29-30
- Vancouver Activities..... 31-32

### Accommodations

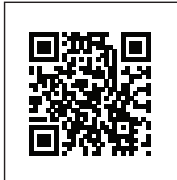
- Homestay Accommodation..... 27
- Residence Accommodation..... 28
- Pick-up and Drop-off service..... 28

### Registration Process

- Fees..... 33
- How to Register..... 35
- Bank Information ..... 36
- Registration Form..... 37
- Start Dates..... 38



# Voted #1 English Language School in Canada by Students & Agents



## LTM Lifetime Superstar Award

In Recognition for Winning the LTM Star English Language School North America Award 5 Years in a Row  
*- Language Travel Magazine Star Awards*



## LTM Star English Language School North America

**2011/2010/2009/2008/2007**  
*- Language Travel Magazine Star Awards*



## Best English School in Toronto

**2012**  
Consumer Choice Award  
*- Survey conducted by Leger Marketing, the leader in Canada for research and polling*



## Top University Pathway Program

WINNER 6 Years in a Row  
**2012/2011/2010/2009/2008/2007**  
*- Top Choice Awards (TCA), Mark of Excellence*



## No. 1 in Canada

**2010**  
Japan Best School Award, ILAC Vancouver  
*- Ryugaku Journal*



## Toronto Best School

**2011**  
*- Will Ryugaku Center*

# 50

## 50 Best Managed Companies

**2011/2010**  
Regional Finalist in 2011  
Platinum Club Finalist in 2010  
*- Deloitte, CIBC, National Post, Queen's School of Business*



## Best Language School

Voted BEST Language School in Toronto  
**2005**  
*- Eye Weekly Magazine*

# Toronto

The most cosmopolitan city in the world



ILAC is located in the chic Yorkville neighbourhood





# ILAC Toronto



920 Yonge Street, 4<sup>th</sup> floor  
Toronto, ON, Canada, M4W-3C7  
Tel: +1 (416) 961.5151  
Fax: +1 (416) 961.5988 or +1 (416) 961.9267  
Skype Toll Free: 1(877) 452.2452



### Study in one of the world's most exciting cities and experience:

- Excellent shopping, entertainment and night life
- Multicultural, friendly and safe environment
- World-famous cultural attractions including Niagara Falls, CN Tower, Sky Dome, Harbour front and the Distillery District
- Convenient 24-hour public transportation
- Proximity to New York city, Niagara Falls, Ottawa, Montreal & Quebec City

### Facilities include:

- Centrally located in downtown Toronto's trendy Yorkville neighbourhood
- Boutique design and layout
- Near a major subway station where both subway lines meet (Bloor line and Yonge line)
- Walking distance to restaurants, cinemas, cafes, shopping, museums and the University of Toronto
- 90 + Classrooms
- 100 + Computers
- FREE High Speed Wireless Internet
- Modern student lounges and common areas



**Scan me**  
with your Smartphone  
to learn more about  
ILAC's Toronto Campus



## Meet our Academic Administrators



John



Marcio



Alicia



Julie

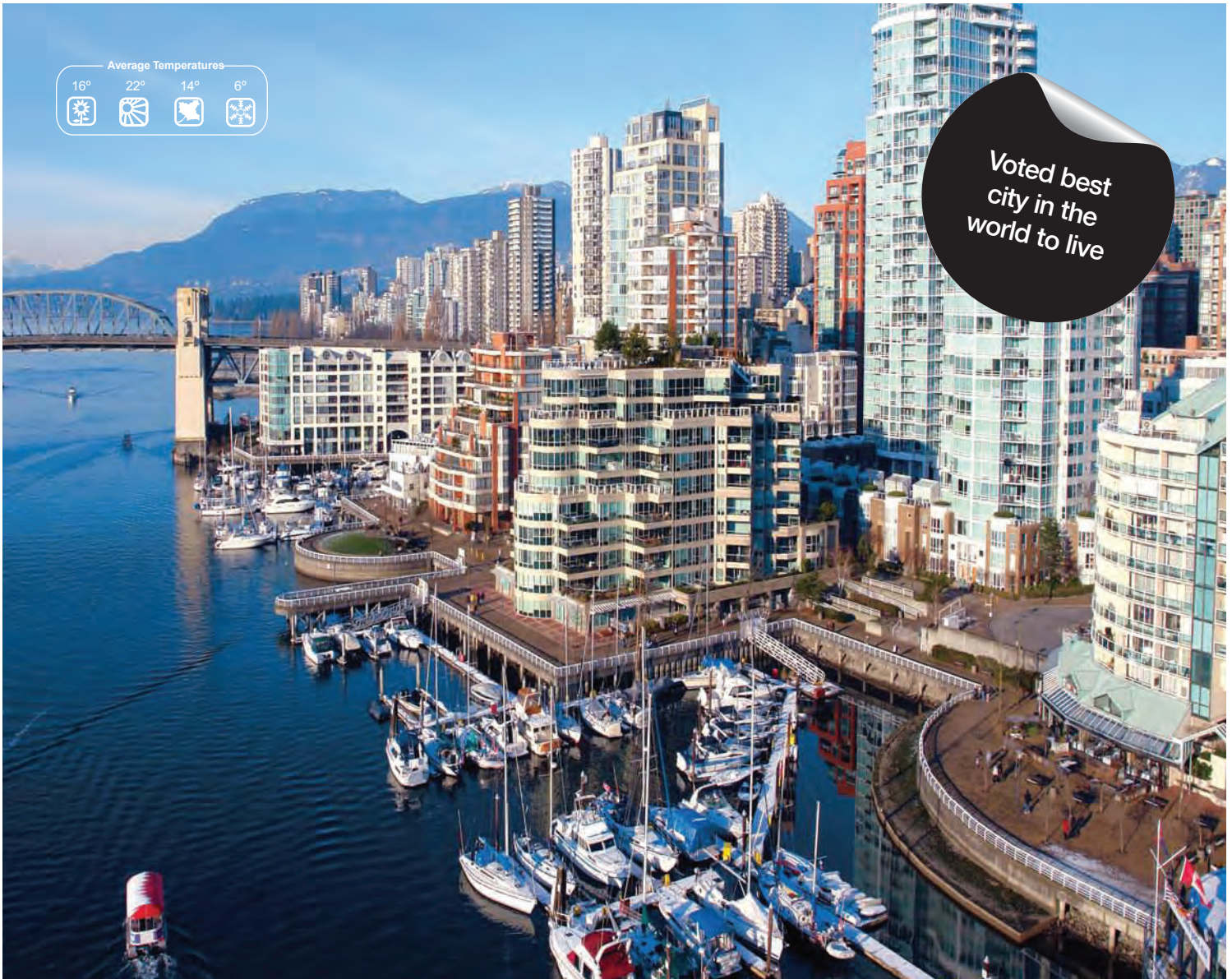


Rachel

All ILAC teachers have experience teaching English as a Second Language and are TESOL or CELTA certified.  
Meet them online at [www.ilac.com/torteachers](http://www.ilac.com/torteachers)

# Vancouver

The most beautiful city in Canada



ILAC is located in the heart of the fashionable downtown district





# ILAC Vancouver



688 West Hastings Street, 3<sup>rd</sup> floor  
Vancouver, BC, Canada, V6B-1P1  
Tel: +1 (604) 484.6660  
Fax: +1 (604) 484.6637  
Skype Toll Free: 1 (877) 452.2452



### Study in Canada's warmest and most naturally beautiful city and experience:

- Spectacular views of the mountains and the Pacific Ocean
- Beaches, recreational parks and beautiful neighborhoods
- Close to Granville Island, Gastown, Yaletown, The Seawall, Stanley Park and Coal Harbour
- Clean, friendly and safe environment
- Outdoor activities to suit the great climate
- Proximity to Whistler, Victoria and Seattle

### Facilities include:

- Centrally located in fashionable downtown Vancouver
- Boutique design and layout
- Beside the Main Transportation Station, where all major lines meet (the SeaBus terminal, both SkyTrain lines and the Granville Bus routes)
- Walking distance to shopping, restaurants, cafes, Simon Fraser University, British Columbia Institute of Technology
- 73 Classrooms
- 100 Computers
- FREE High Speed Wireless Internet
- ETS Authorized TOEFL iBT Center
- Cambridge Authorized Examination Venue
- Modern student lounges in all locations
- Outdoor patio with sofa and garden
- Large projection screen for TV, video games and movie nights



## Meet our Academic Administrators



Alex



Jordi



Sky

Scan me  
with your Smartphone  
to learn more about  
ILAC's Vancouver Campus



All ILAC teachers have experience teaching English as a Second Language and are TESOL or CELTA certified.  
Meet them online at [www.ilac.com/vanteachers](http://www.ilac.com/vanteachers)

# Where the World Meets to Study English

Students from over 70 countries



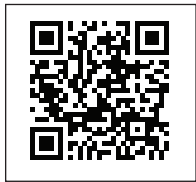
## Statistics by Age

ILAC Toronto		ILAC Vancouver	
Age Range:		Age Range:	
18-20	23%	18-20	22%
<b>21-30</b>	<b>63%</b>	<b>21-30</b>	<b>67%</b>
30+	14%	30+	11%
Average Age	24.8 years	Average Age	24.1 years

## Statistics by Region

ILAC Toronto		ILAC Vancouver	
Latin America	39%	Latin America	38%
Europe & Middle East	35%	Europe & Middle East	23%
Asia	26%	Asia	39%





# Meet the ILAC Team

## Student Advisors & Agent Support



Jonathan  
Director  
jonathan@ilac.com



Bernardo  
Director  
bernie@ilac.com



Ilan  
Director  
ilan@ilac.com



Alex  
alex@ilac.com



Fabiana  
fabiana@ilac.com



Tatiana  
tatiana@ilac.com



Carol  
carol@ilac.com



Maryann  
maryann.calderon@ilac.com



Razi  
razi@ilac.com



Lisa  
lisa@ilac.com



Sumiyo  
sumiyo@ilac.com



Marwa  
marwa@ilac.com



Cristina  
cristina@ilac.com



Marcela  
marcela@ilac.com



Ivan  
ivan@ilac.com



Juliana  
juliana.capalbo@ilac.com



Yuko  
yuko@ilac.com



Isabel  
isabel@ilac.com



Sayaka  
sayaka@ilac.com



Hikari  
hikari@ilac.com



Tamer  
tamer@ilac.com



Olga  
olga@ilac.com



Marina  
marina@ilac.com



Camila  
camila.mendoza@ilac.com



Svetlana  
svetlana@ilac.com



Ana  
ana@ilac.com



ViVi  
vivi.thoi@ilac.com



Saria  
saria@ilac.com



Dorothee  
dorothee@ilac.com



Clara  
clara.kim@ilac.com



Oben  
oben@ilac.com



Cintia  
cintia.rodriguez@ilac.com



Juan  
juan.cajiao@ilac.com



Judy  
judy.jung@ilac.com



Gosia  
gosia@ilac.com



Ozlem  
ozlem.sengul@ilac.com



Jessica  
jessica.yeung@ilac.com



Vitto  
vitto@ilac.com



Andrea  
andrea.bianchi@ilac.com

## Social Activities

## University Advisors



Carolyn  
carolyn@ilac.com



Diana  
diana@ilac.com



Galina  
galina@ilac.com



Hande  
hande@ilac.com



Hannah  
hannah.dang@ilac.com

## Internship Specialists



Arda  
arda@ilac.com



Scott  
scott@ilac.com

# ILAC Programs



## General English

The General English as a Second Language curriculum follows Cambridge examination methodology. All students in Beginner and Intermediate levels take General English before taking more advanced courses. General English is for levels 1 – 11.

page 17

## Exam Preparation (TOEFL, Cambridge FCE or CAE, IELTS)

Students preparing for international English proficiency exams can begin as early as level 10. TOEFL and IELTS courses are divided by levels. Students are trained in all aspects of the exams. Cambridge courses are divided by levels. Students at level 10 prepare for the FCE and students at level 14 prepare for the CAE.

page 18



## Business English

The Business English Courses teach English fluency for use in professional business situations. Students learn business through listening, reading, speaking, writing alongside real case studies and current events. Students also prepare for the Cambridge Business Examinations (BEC).

page 19

## Teacher Training – TESOL

ILAC's TESOL program certifies you to teach English as a Second Language all over the world. Depending on your level and experience your program will be 4 weeks.

page 20



## University Pathway Program

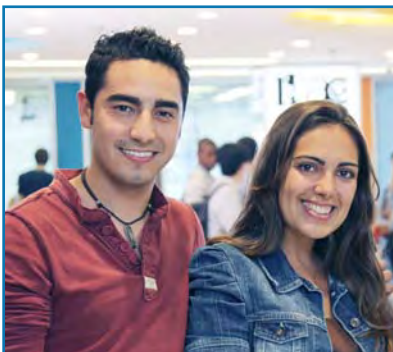
All students who graduate from the Pre-Degree Certificate program are able to achieve the required TOEFL score and acquire the academic skills to succeed in University. This includes writing essays, researching and giving oral presentations. Our team of qualified University Placement specialists will help you gain acceptance to the University or College of your choice.

page 21

## GMAT Preparation

This program is a combination of the Pre-Degree Certificate and GMAT Preparation with The Princeton Review. The Princeton Review is recognized as the best GMAT preparation in the world.

page 23



## Study & Work Program

This program is designed for students to work in Canada after completing their English studies. Students must be at least level 12 (Advanced fluency). Students with Advanced or High English will have better placement options. Students can choose from many different positions in hospitality or professional fields.

page 24

## High School Year – Grade 12 or Grade 11

The High School Year program includes 10 courses and is a combination of English and High School courses. This is designed for students to improve their GPA, receive a Canadian High School Diploma and increase their chances for success in university.

page 25



# Choose Your Program



ILAC offers many different English courses for every age, level and purpose.

## Program Focus

English Levels		General English	Exam Preparation	Business English	Teacher Training	University Pathway Program	GMAT Preparation	Internship Program	High School Year	
University Proficiency	17	General English	CAE or TOEFL or IELTS	Advanced Business English	TESOL	Pre-Degree III Certificate	Pre-MBA	Study & Work	Grade 12 or Grade 11	
	16									
High Advanced	15									
	14									
Advanced	13		FCE or TOEFL or IELTS	Introduction to Business English			Pre-Degree II			
	12									
Pre-Advanced	11		Pre-Degree I							
	10									
High-Intermediate	9									
	8									
Intermediate	7									
	6									
Pre-Intermediate	5									
	4									
Beginner	3									
	2									
Introduction	1									

# English Program Intensity

## Choose Either:

- Intensive English (30 lessons per week)
- Power English (38 lessons per week)

Both programs are available to all students at all levels

**Students who choose Power English will progress 30% faster.**

## Intensive English: 30 lessons/week

**Principal Class** + **Elective Class**  
(26 lessons/week) (4 lessons/week)

### Sample Schedule

	Monday	Tuesday	Wednesday	Thursday	Friday
8:45 am - 11:45 am	Principal Class	Principal Class	Principal Class	Principal Class	Principal Class
LUNCH					
12:15 pm - 1:45 pm	Principal Class	Elective Class	Principal Class	Elective Class	Principal Class

*Each lesson is 45 minutes in length*

## Power English: 38 lessons/week

**Principal Class** + **Elective Class** + **Power Class**  
(26 lessons/week) (4 lessons/week) (8 lessons/week)

### Sample Schedule

	Monday	Tuesday	Wednesday	Thursday	Friday
8:45 am - 11:45 am	Principal Class	Principal Class	Principal Class	Principal Class	Principal Class
LUNCH					
12:15 pm - 1:45 pm	Principal Class	Elective Class	Principal Class	Elective Class	Principal Class
BREAK					
2:15 pm - 3:45 pm	Power Class	Power Class	Power Class	Power Class	FREE TIME

*Each lesson is 45 minutes in length*

## Program Structure

- ILAC has 17 levels of English
- Each English level is 4 weeks
- Students pass a level every 4 weeks or finish faster with above average performance
- Students can change their classes every week

### Principal Class (26 lessons per week)

- Main class for course focus (see page 11-12 for details)
- Intensive and Power English Programs include the Principal Class

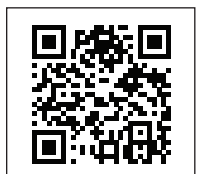
### Elective Class (4 lessons per week)

- Intensive and Power English programs include an Elective Class
- Choose an elective class based on your specific needs including: speaking, listening, pronunciation, grammar, writing, idioms, vocabulary, business, TOEFL, IELTS, oral presentations, English through media, debating, current events and more

### Power Class (8 lessons per week)

To learn English and progress faster, students can choose the Power English program which includes an extra Power Class in the afternoon. Students may choose either:

- 1) **Power Communication Class** – this class focuses on speaking and listening and gives students extra practice using real life situations.
- 2) **Power Academic Class** – this class has three components, academic reading, academic writing and homework support. All students who want to pursue higher education or maximize their professional English skills are encouraged to take this class.



## Take our Online Test

- This test will help you determine your English level and length of study.  
[www.ilac.com/onlinetest](http://www.ilac.com/onlinetest)



# Program & Course Chart

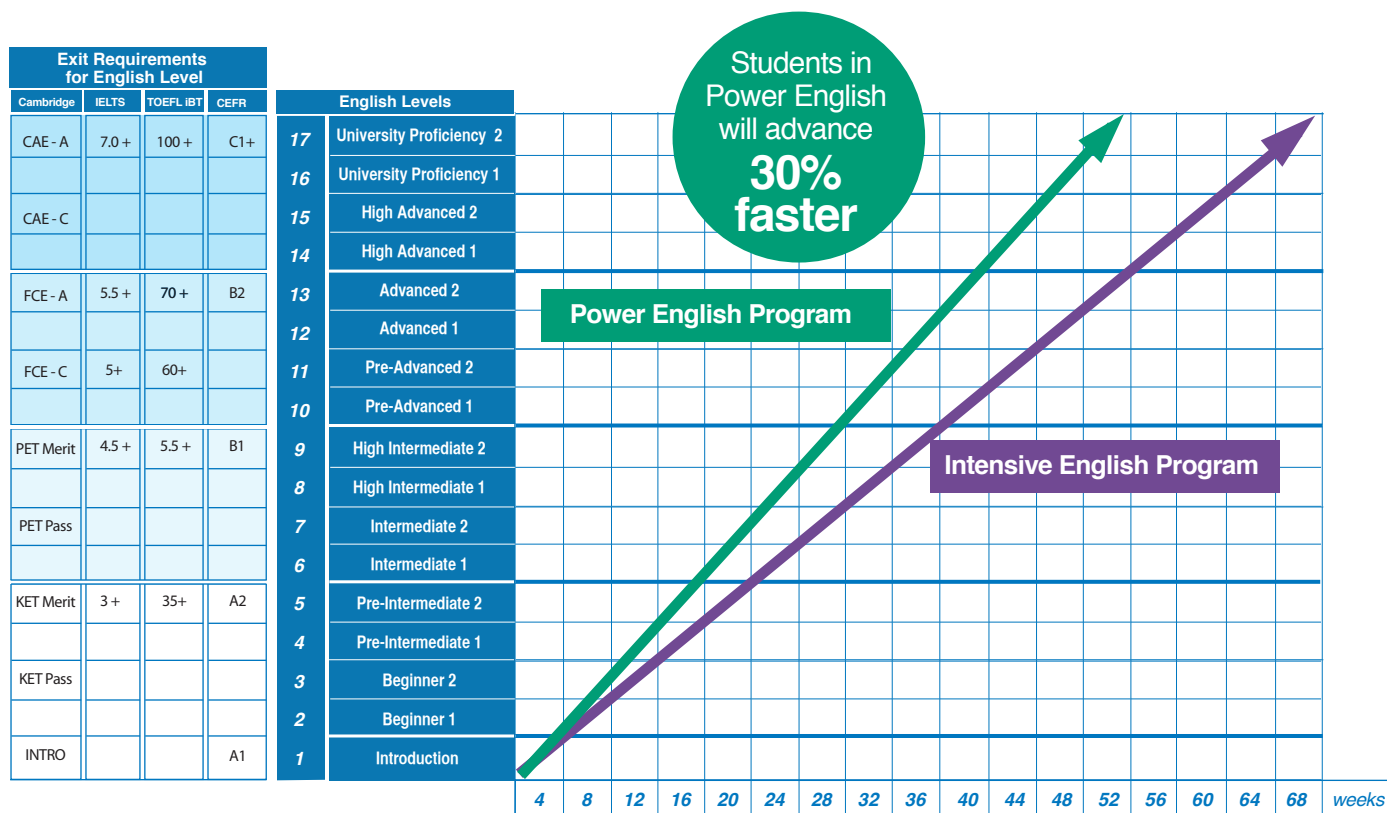
Each English level is 4 weeks long

English Levels (Each English level is 4 weeks)	1	2	3	4	5	6	7	8	9	10	11	12	13	14	15	16	17
	Introduction to English	Beginner 1	Beginner 2	Pre - Intermediate 1	Pre - Intermediate 2	Intermediate 1	Intermediate 2	High Intermediate 1	High Intermediate 2	Pre - Advanced 1	Pre - Advanced 2	Advanced 1	Advanced 2	High Advanced 1	High Advanced 2	University 1	University 2
Intensive English Program (30 lessons/week)	●	●	●	●	●	●	●	●	●	●	●	●	●	●	●	●	●
Power English Program (38 lessons/week)	●	●	●	●	●	●	●	●	●	●	●	●	●	●	●	●	●
<b>Principal Class Courses (26 lessons/week)</b>																	
General English	●	●	●	●	●	●	●	●	●	●	●	●	●	●	●	●	●
Cambridge English (FCE)										●	●	●	●				
Cambridge English (CAE)														●	●	●	●
TOEFL Preparation										●	●	●	●	●	●	●	●
IELTS Preparation										●	●	●	●	●	●	●	●
Business English										●	●	●	●	●	●	●	●
Pre - Degree I										●	●						
Pre - Degree II												●	●				
Pre - Degree III Certificate														●	●	●	
<b>Elective Class Courses (4 lessons/week)</b>																	
Speaking & Listening	●	●	●	●	●	●	●	●	●	●	●	●	●	●	●	●	●
Pronunciation				●	●	●	●	●	●	●	●	●	●	●	●	●	●
Grammar				●	●	●	●	●	●	●	●	●	●	●	●	●	●
Writing				●	●	●	●	●	●	●	●	●	●	●	●	●	●
Idioms & Vocabulary								●	●	●	●	●	●	●	●	●	●
Business								●	●	●	●	●	●	●	●	●	●
English Through Media								●	●	●	●	●	●	●	●	●	●
Current Events & Debates										●	●	●	●	●	●	●	●
Canadian Culture										●	●	●	●	●	●	●	●
Oral Presentation										●	●	●	●	●	●	●	●
Academic Writing								●	●	●	●	●	●	●	●	●	●
TOEFL Test Preparation								●	●	●	●	●	●	●	●	●	●
IELTS Test Preparation								●	●	●	●	●	●	●	●	●	●
Career Start								●	●	●	●	●	●	●	●	●	●
FCE Preparation										●	●	●	●	●	●	●	●
CAE Preparation													●	●	●	●	●
<b>Power Class Courses (8 lessons/week)</b>																	
Power Communication	●	●	●	●	●	●	●	●	●	●	●	●	●	●	●	●	●
Power Academic	●	●	●	●	●	●	●	●	●	●	●	●	●	●	●	●	●
<b>Other Courses</b>																	
TESOL Preparation/Certificate/Diploma														●	●	●	●
GMAT Preparation														●	●	●	●
Study & Work Program												●	●	●	●	●	●
High School Year												●	●	●	●	●	●

## EXIT TEST Scores Equivalencies with ILAC Levels

English Levels (Each English level is 4 weeks)	1	2	3	4	5	6	7	8	9	10	11	12	13	14	15	16	17
Cambridge	Intro		KET Pass		KET Merit		PET Pass		PET Merit		FCE-C		FCE-A		CAE-C		CAE-A
IELTS					3+				4.5+		5+		5.5+				7.0+
TOEFL iBT					35+				55+		60+		70+				100+
CEFR	A1				A2				B1				B2				C1+

# Progress Chart



## ILAC's English Levels

- Each English level lasts for 4 weeks
- Students will be graded on course work and independent proficiency exams using practice Cambridge exams.
- Students will be tested every 2 weeks

## ILAC's English Bands

- Each band lasts for 8 weeks (1 band = 2 English Levels)
- Example: The Intermediate band includes levels Intermediate 1 and Intermediate 2

## Exit Requirements

Once students achieve the 'Exit' score, they immediately move up to the next level.

For example, if you are in the Intermediate band (Intermediate 1 or Intermediate 2 Level) and on your practice PET exam you score a MERIT, you will move (level-up) to Pre-Advanced 1 level.



# Progressing FASTER



## Power English for Faster Progress

- Advance faster by registering in Power English

## Normal Progress

- Complete one Level every 4 weeks

## Faster Progress

- Work hard to progress faster through our Level-Up system
- Complete **4 Levels in 12 weeks**
- Progress faster by doing well in the practice Cambridge Examinations

## Level-Up System

Students can finish their levels early if they do well on the practice Cambridge Examinations.

In each level, students write a practice Cambridge test every second week.

If students meet the exit requirements of their level, the school will advise them to “level-up.”

## Power English Program for Faster Progress

Students who would like to progress faster through their studies are encouraged to enroll in the Power English program.

## Standardized Testing System

- Levels 3 to 5 are tested using the Cambridge Key English Test (KET)
- Levels 6 to 9 are tested using the Cambridge Preliminary English Test (PET)
- Levels 10 to 13 are tested using the Cambridge First Certificate of English (FCE)
- Students have the opportunity to level-up faster by doing well on the Cambridge practice exams

### Take our Online Test

- This test will help you determine your English level and length of study. [www.ilac.com/onlinetest](http://www.ilac.com/onlinetest)

# General English

## Beginner to Pre-Advanced Levels

Each English level is 4 weeks																	
English levels	1	2	3	4	5	6	7	8	9	10	11	12	13	14	15	16	17
ILAC Bands	Intro	Beginner		Pre-Intermediate		Intermediate		High-Intermediate		Pre-Advanced		Advanced		High-Advanced		University	
Principal Courses Available	General English											Choose an Advanced course					

### Description

- Students who take this course receive a Certificate of English fluency based on their final level completed and length of study
- Students gain the English writing and speaking skills necessary for everyday social situations
- Students develop speaking, listening, reading and writing skills as well as grammar, vocabulary, pronunciation and idioms

### Duration

- The minimum course length is 2 weeks
- Students may study for as many levels as required

### Program Options

- Intensive English Program (30 lessons/week)
- Power English Program (38 lessons/week)

### Requirements

- Students take a written and oral placement test on their first day to determine their English Level
- Students tested at Beginner or Intermediate Levels are placed in General English
- Students who test above Level 10 may choose a Program Focus or can continue in General English

### Start Dates

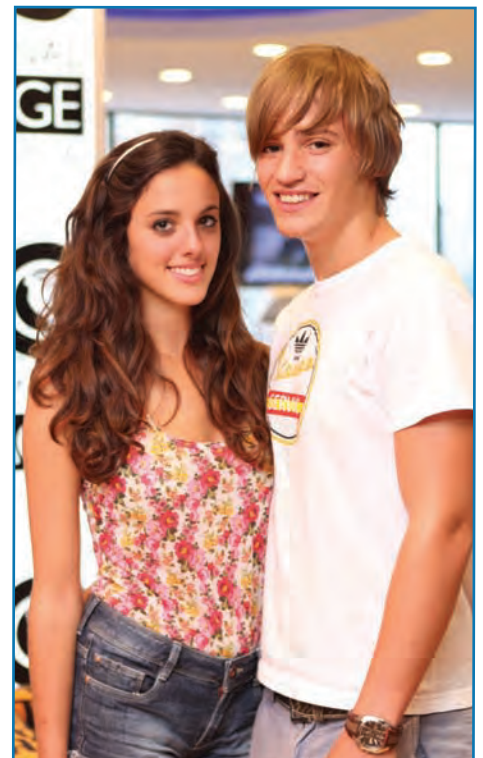
- Every second Monday (please see calendar on page 38 for exact dates)

### Fees \*All fees are in Canadian dollars

Course Length Weeks	Intensive English Program (30 lessons/wk) Weekly fee	Power English Program (38 lessons/wk) Weekly fee
1 - 10	\$320	\$380
11 - 21	305	365
22 - 32	290	345
33 - 43	275	325
44 +	265	315

### Take our Online Test

- [www.ilac.com/onlinetest](http://www.ilac.com/onlinetest)
- Students are encouraged to take the first step to plan their study period. After you take the Online Test contact [info@ilac.com](mailto:info@ilac.com) for a customized study plan.





# Exam Preparation

## TOEFL • IELTS • Cambridge FCE & CAE

Each English level is 4 weeks

English levels	1	2	3	4	5	6	7	8	9	10	11	12	13	14	15	16	17
ILAC Bands	Intro	Beginner		Pre-Intermediate		Intermediate		High-Intermediate		Pre-Advanced		Advanced		High-Advanced		University	
Principal Courses Available	General English									FCE Preparation			CAE Preparation				
	TOEFL Preparation																
	IELTS Preparation																

### Description

- Students receive an ILAC Certificate based on their length of study and final grade
- From Level 10, students can choose to prepare for one of the main fluency exams; TOEFL, IELTS or Cambridge FCE & CAE
- Students are taught by teachers who specialize in training students for test taking
- Students develop confidence and techniques in test taking
- ILAC guarantees a higher test score or your money back
- ILAC Vancouver is an approved ETS® Certified Test Administration Site



### Duration

- Minimum course length is 2 weeks
- Complete course for FCE Preparation or the CAE Exam Preparation is 12 weeks each
- Complete TOEFL or IELTS Preparation course is 24 weeks if you are at Level 10 or 12 weeks if you are at level 14
- Students may study for as many levels or weeks as required

### Start Dates

- Every second Monday (please see calendar on page 38 for exact dates)

### Fees \*All fees are in Canadian dollars

Course Length Weeks	Intensive English Program (30 lessons/wk) Weekly fee	Power English Program (38 lessons/wk) Weekly fee
1 - 10	\$320	\$380
11 - 21	305	365
22 - 32	290	345
33 - 43	275	325
44 +	265	315

### Program Options

- Intensive English Program (30 lessons/week)
- Power English Program (38 lessons/week)

### Requirements

- Students take a written and oral placement test on their first day to determine their English level
- Beginner and Intermediate students start in General English Principal classes and begin taking Exam Preparation elective classes in level 8. After completing level 9 (or higher level) of General English, students can begin the Exam Preparation course as the Principal class
- Students tested at levels 10+ are immediately eligible to enter the English Exam Preparation courses



# Business English

## Preparation for the Cambridge Business Exam (BEC)

Each English level is 4 weeks																	
English levels	1	2	3	4	5	6	7	8	9	10	11	12	13	14	15	16	17
ILAC Bands	Intro	Beginner		Pre-Intermediate		Intermediate		High-Intermediate		Pre-Advanced		Advanced		High-Advanced		University	
Principal Courses Available	General English									Introduction to Business English		Advanced Business English					

### Description

- Students develop the English skills necessary to work and communicate in an international business environment. Topics include negotiating, networking, managing meetings, interviewing and socializing in a business environment; as well as the ability to write effective business correspondence, informal and formal reports and presentation materials
- Students develop the skills necessary to pass the Cambridge Business Examinations (BEC)
- Students are tested using the Business English Exam (BEC). This exam is internationally recognized and provides the skills for using English in the workplace
- Students receive a Certificate of Business English Fluency

### Take our Online Test

- [www.ilac.com/onlinetest](http://www.ilac.com/onlinetest)
- Students are encouraged to take the Online Test in order to plan their study period. Contact [info@ilac.com](mailto:info@ilac.com) for a customized study plan.

### Duration

- Students can study for as many levels as required
- The minimum course length is 2 weeks
- Students tested at level 10 begin in the Introduction to Business course (12 weeks)
- Students tested at level 12 study in the Advanced Business course (12 weeks)

### Start Dates

- Every second Monday (please see calendar on page 38 for exact dates)

### Fees \*All fees are in Canadian dollars

Course Length	Intensive English Program (30 lessons/wk)	Power English Program (38 lessons/wk)
Weeks	Weekly fee	Weekly fee
1 - 10	\$320	\$380
11 - 21	305	365
22 - 32	290	345
33 - 43	275	325
44 +	265	315

### Program Options

- Intensive English Program (30 lessons/week)
- Power English Program (38 lessons/week)

### Requirements

- Students take a written and oral placement test on the first day to determine English level
- Beginner and Intermediate students start in General English Principal classes and begin taking Business English electives classes in level 8. After completing level 9 students can begin the Business English program as the principal class
- Students tested at levels 10+ are immediately eligible to enter the Business English program





# Teacher Training

## TESOL Courses

Each English level is 4 weeks

English levels	1	2	3	4	5	6	7	8	9	10	11	12	13	14	15	16	17
ILAC Bands	Intro	Beginner		Pre-Intermediate	Intermediate		High-Intermediate		Pre-Advanced		Advanced		High-Advanced		University		
Principal Courses Available	General English									Choose an Advanced Course				TESOL			

### International TESOL Certificate

- Offered to international students who want to go back to their country to teach English or want an additional academic English achievement for their resume
- Study alongside native Canadians preparing to start their international teaching careers
- Includes 100 hours of instruction plus a mandatory 20 hour practicum
- Minimum ILAC level 14 required, as well as a letter of intent and a successful oral interview with the Director of Studies

**Duration:** 4 weeks

**Schedule:** Monday to Friday, 2:30pm to 7:30pm

**Start Dates 2013**

Please visit: [www.ilac.com/programs/tesol\\_diploma.php](http://www.ilac.com/programs/tesol_diploma.php) for start dates.

### Fees *\*All fees are in Canadian dollars*

TESOL Course	Course Length	
International TESOL Certificate	4 week course fee	Fee \$990



# University Pathway Program

## Pre - Degree Certificate Program

Each English level is 4 weeks

English levels	1	2	3	4	5	6	7	8	9	10	11	12	13	14	15	16	17
ILAC Bands	Intro	Beginner		Pre-Intermediate		Intermediate		High-Intermediate		Pre-Advanced		Advanced		High-Advanced		University	
Principal Courses Available	General English									Pre-Degree I		Pre-Degree II		Pre-Degree III Certificate			

### Description

- Prepares students to study at a Canadian university or college
- Students learn to write university essays of 1000+ words, critical thinking, time management, oral presentations, exam techniques, academic research and TOEFL preparation and practice
- Successful students can enroll in any of ILAC's 50+ partner universities and colleges throughout Canada
- All graduates will be able to achieve a successful TOEFL score of 80 – 100 iBT

### Program Levels

Students must test at at miminim Pre-Advanced Level (Level 10) to begin the program. Students who test below Level 10 must complete the General English Program prior to entering the Pre-Degree Certificate Program.

#### Pre-Degree I

- Students who test at a the Pre-Advanced Level (Level 10 & Level 11)

#### Pre-Degree II

- Students who test at the Advanced Level (Level 12 & 13)

#### Pre-Degree III

- Students who test at the High Advanced Level (Level 14 & 15) or have a high TOEFL/IELTS score



### Program Options

- Intensive English Program (30 lessons/week)
- Power English Program (38 lessons/week)

### Start Dates

- Every second Monday (please see calendar on page 38 for exact dates)

### Fees \*All fees are in Canadian dollars

Course Length	Intensive English Program (30 lessons/wk) Weekly fee	Power English Program (38 lessons/wk) Weekly fee
1 - 10	\$320	\$380
11 - 21	305	365
22 - 32	290	345
33 - 43	275	325
44 +	265	315





# Pathway Program University/College

## Meet our University Placement Specialists



Carolyn  
carolyn@ilac.com



Galina  
galina@ilac.com



Hande  
hande@ilac.com



Diana  
diana@ilac.com



Hannah  
hannah.dang@ilac.com

### University Placement

ILAC University Placement Specialists help you:

- 1) Choose the best program for you based on your goals and academic background
- 2) Apply to a university or college program
- 3) Receive a Conditional Letter of Acceptance from university
- 4) Recommend an agent in your country if you need help with your student visa

### Free University Placement Services\*

- Contact one of our University Placement Specialists for FREE personalized academic counselling:

**Email: [academic@ilac.com](mailto:academic@ilac.com)**

**Ph: +1 (416) 840.4169 or Skype Toll Free: 1 (877) 452-2452**

### Take our Online Test

- [www.ilac.com/onlinetest](http://www.ilac.com/onlinetest)
- Students are encouraged to take the Online Test in order to plan their study period

**Andrea Muñoz is from Valencia, Venezuela. She completed the pre-degree program at ILAC and is now studying Industrial Engineering at St. Mary's University in Halifax, Nova Scotia.**



"My parents wanted me to come to Canada to learn English and then I decided to stay for university. Canada offers me more opportunities than in my country, and the people here are friendly and nice."

### University & College Programs

- Bachelor Degrees (Undergraduate)
- College Diplomas
- Post Graduate Diplomas
- MBA and Masters Degrees

### ILAC's Partner Universities & Colleges

- |   |   |
|---|---|
| Algoma University   | NAIT  |
| Arbutus College   | Niagara College                               |
| Algonquin College   | Nimbus School of Music Engineering            |
| Blanche MacDonald Centre  | North Island College                          |
| Brock University Faculty of Graduate Studies in Business: ISP   | Red River College                             |
| Camosun College   | Royal Roads University                        |
| Capilano University   | SAIT Polytechnic                              |
| Centennial College  | Seneca College                                |
| Conestoga College   | Sheridan College                              |
| Douglas College   | Saint Mary's University                       |
| Durham College  | St. Clair College                             |
| Fairleigh Dickinson University                                  | St. Lawrence College                          |
| Fanshawe College  | Thompson Rivers University                    |
| Fraser International College                                    | Trent University                              |
| George Brown College  | University of Manitoba                        |
| Georgian College  | University of Michigan-Flint                  |
| Humber College  | University of New Brunswick                   |
| Huron University College at The University of Western Ontario   | University of Ontario Institute of Technology |
| Fraser International College (FIC) at Simon Fraser University   | University of Prince Edward Island            |
| International College of Manitoba at the University of Manitoba | University of Regina                          |
| King's University College at The University of Western Ontario  | University of Toronto Foundation Program      |
| Kwantlen Polytechnic University                                 | University of Windsor                         |
| Laurentian University   | University of Winnipeg                        |
| Mount Saint Vincent University                                  | Vancouver Film School                         |
| Mohawk College  | Vancouver Community College                   |
|   | Vancouver Island University                   |
|   | Wilfrid Laurier University                    |

\*Students who have obtained their visa with the help of a letter of acceptance from ILAC and a conditional letter of acceptance and/or supporting letter to a Pathway Program institution will be expected to complete their English language training at ILAC and not be eligible for a refund.

# GMAT Preparation

## Graduate Management Admission Test

Each English level is 4 weeks

English levels	1	2	3	4	5	6	7	8	9	10	11	12	13	14	15	16	17
ILAC Bands	Intro	Beginner		Pre-Intermediate	Intermediate		High-Intermediate		Pre-Advanced		Advanced		High-Advanced		University		
Principal Courses Available	General English									University Pathway Program			GMAT Preparation				

### Description

- Sharpen your verbal and quantitative skills
- Gain proven test-taking strategies to get into business school
- This course consists of two parts:
  - (1) ILAC's Pre-Degree Certificate Program (see page 21-22 for details)
  - (2) GMAT Preparation Program with The Princeton Review [www.princetonreview.com](http://www.princetonreview.com)
- GMAT classes at The Princeton Review are 9 weeks in length, consisting of one weekly three-hour class. The Princeton Review is regarded as the best GMAT preparation program
- Students can take the GMAT preparation course in the evening or on weekends at the same time as the Pre-Degree program or immediately after they finish the Pre-Degree program



### The Princeton Review GMAT Preparation Program Highlights

- Small classes, maximum 4 students per class
- Highly skilled instructors certified by a Princeton Review Master trainer
- 5 full-length computer adaptive practice tests
- Optional Math Boot Camp
- Feedback on your analytical writing assessment (AWA) through The Princeton Review's LiveGrader SM System
- Private Tutoring (option) gives you one-on-one instruction customized to your needs
- Satisfaction Guaranteed (details available at [www.princetonreview.com/guarantee](http://www.princetonreview.com/guarantee))



### Fees \*All fees are in Canadian dollars

GMAT Preparation Course	GMAT Prep Course with 3 hours of private tutoring
Fee	Fee
\$1599 OR	\$2058

Test names are the trademarks of their respective owners who are not affiliated with The Princeton Review. The Princeton Review is not affiliated with Princeton University.



### University Placement Services

- ILAC University Placement Specialists can guide you through the university application process
- Free personalized academic counseling
- Conditional letters of acceptance to ILAC's 50+ university & college partners\*

\*Students who have obtained their visa with the help of a letter of acceptance from ILAC and a conditional letter of acceptance and/or supporting letter to a Pathway Program institution will be expected to complete their English language training at ILAC and not be eligible for a refund.



# Study & Work Program



Arda  
Internship Specialist  
Toronto  
arda@ilac.com



Scott  
Internship Specialist  
Vancouver  
scott@ilac.com

Each English level is 4 weeks

English levels	1	2	3	4	5	6	7	8	9	10	11	12	13	14	15	16	17
ILAC Bands	Intro	Beginner	Pre-Intermediate	Intermediate	High-Intermediate	Pre-Advanced											
Principal Courses Available	General English											Study & Work					

## Part 1: English Studies - 50% of your program

Students begin General English studies at ILAC in Toronto or Vancouver. Students are assigned their principal class based on their tested English level. In addition, students receive specific Business English language instruction during the final 4 weeks of their classes.

Students receive 6 modules of Internship Preparation in addition to their ESL Classes. Each module is offered every 2 weeks and topics include:

- 1) Creating a Resume Part 1
- 2) Creating a Resume Part 2
- 3) Writing a Cover Letter Part 1
- 4) Writing a Cover Letter Part 2
- 5) Interview Skills for English Employees
- 6) Effective Job Searching in Canada

## Part 2: Placement - 50% of your program

After completing the English Program at ILAC, students apply their English skills and gain valuable work experience in the hospitality industry or business field. The work placement is 50% or less of the total program length.

**Locations:** Toronto, Vancouver, The Rocky Mountains and Whistler

**Professional Placement Opportunities:** Business Administration, Engineering, Media, Tourism and Law. Please inquire about other professional specializations

**Hospitality Placement Opportunities:** Guest Services, Store and Sales Assistant, Restaurant Server and Housekeeping

## Part 3: Research Paper

Students must research and complete a final report of at least 1,000 words based on their work placement experience, in order to receive a Study & Internship Certificate.

## Fees \*All fees are in Canadian dollars

Course Length	Course Fee
8 - 24 weeks	\$1,200

## Application & Pre-Evaluation Process

1. Please take the free online English test [www.ilac.com/onlinetest](http://www.ilac.com/onlinetest)
2. Send an e-mail to [internship@ilac.com](mailto:internship@ilac.com) including the following information:
  - Your program choice
  - If you choose the Professional Internship option, please specify your area of interest and attach your resume in English
  - Your desired start date
  - Your choice of location (Toronto, Vancouver, The Rocky Mountains or Whistler)
  - Enclose your results from our online English Test
3. The Internship Director
  - Will send you the internship application, the required length of your study period and the start date of your work placement
  - May conduct a telephone interview before you arrive

### Notes:

- Students must be between 19 - 30 years of age
- All placements are based on reaching the required English level, having the necessary education and experience, having the right attitude and flexibility; the longer the placement, the greater the options
- Students must secure the appropriate visa
- ILAC is a member of *Languages Canada*

Contact us at [internship@ilac.com](mailto:internship@ilac.com)

# High School Year

## Grade 12 Grade 11

Each English level is 4 weeks

English levels	1	2	3	4	5	6	7	8	9	10	11	12	13	14	15	16	17
ILAC Bands	Intro	Beginner		Pre-Intermediate		Intermediate		High-Intermediate		Pre-Advanced		Advanced		High-Advanced		University	
Principal Courses Available	General English											High School Year					

### Description

- Successful students receive a Canadian High School Diploma
- Students gain real-life experience in the Canadian education system in order to enter university
- ILAC University Placement Specialists are experienced at placing students in the best universities and colleges in Canada.
- Students take English and high-school courses
- Focus on Business and Science courses along with a variety of other academic courses
- Graduates are eligible to apply to any college or university as a Canadian high school graduate
- ILAC also offers grade 10 and 11, please contact us for more info at [highschool@ilac.com](mailto:highschool@ilac.com)

### University Placement Services

- Our experienced University Placement Specialists will help you apply to university.
- Contact us for Free Academic Counselling at [highschool@ilac.com](mailto:highschool@ilac.com)

### Take our Online Test

- [www.ilac.com/onlinetest](http://www.ilac.com/onlinetest)
- Contact: [highschool@ilac.com](mailto:highschool@ilac.com) for a customized study plan

### Duration

- The High School Year is one academic year and can be finished in 40 weeks
- Students may require a longer study period to complete Grade 12 if they need English as a Second Language courses first

### Fees \*All fees are in Canadian dollars

10 Courses	\$13,000
Additional Courses	\$1,300

### Semester Dates

September 10 – December 14, 2012  
 January 7 – March 27, 2013  
 April 1 – June 21, 2013  
 July 1 – August 2, 2013  
 August 5 – August 30, 2013

### Requirements

- Students must be at least Level 12 (completion of Pre-Advanced level) to register in the High School Year Program
- Students can immediately begin taking a combination of English and Grade-12 High School courses
- Students who test at a lower English level will be required to study Power English but it is mandatory to choose Power Academic Writing (8 lessons per week)
- Completion of Grade 12 or 11 of High School from home country



# Join the Conversation on Facebook!



**ilac**  
53, 368 likes · 740 talking about this

Like Message

Education  
<http://ilac.com/> Study and learn English in Canada at ILAC, one of the best known English Language Schools in Canada, with campuses in Toronto & Vancouver

About

Photos Welcome English Test Videos

### Highlights ▾

Post Photo / Video

Write something...

**ilac** Monday  
INTERNATIONAL LANGUAGE ACADEMY OF CANADA

Good morning everyone! Welcome to the new students starting today. We hope you enjoy your studies at ILAC!

**Follow us online!**

[twitter.com/iloveilac](https://twitter.com/iloveilac)

[youtube.com/iloveilac](https://youtube.com/iloveilac)

Recent Posts by Others on ilac [See All](#)

**Marbel Barros**  
I love ILAC because it was the best way to learn english and the best way to explore the city. ILAC is the best!!! Just good memories.  
July 30 at 2:02pm

**Gauhar Arystan**  
One of the best years in my life! Solid knowledge, valuable experience, international friends for life and competent teachers. Please say hello to Ian McKinnon and Dustin.  
July 26 at 3:26pm

**Diana Lucas**  
Everything at ILAC is amazing. If you have the opportunity to go, DO IT!!! ENJOY IT!!! I miss ILAC!  
July 20 at 4:19pm

# Accommodations

Your home away from home

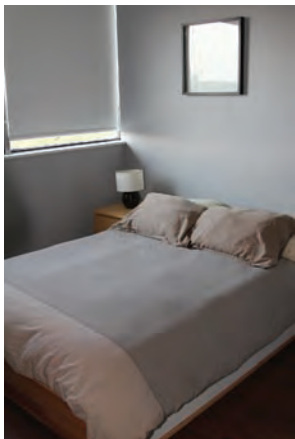
94% of our students would recommend our homestay program to their friends



Our English speaking homestay families are carefully selected to meet your needs. Living with a homestay family is the best way to practice your English in a social setting.

Canada has one of the most diverse populations in the world and we invite you to experience this firsthand in your homestay.

Or live in residence with other international students.





Elisa, Director of Homestay (Toronto)  
eluisa@ilac.com



Chelsea, Director of Homestay (Vancouver)  
Chelsea@ilac.com



Valeria Homestay (Toronto)  
Valeria@ilac.com



Carolina Homestay (Toronto)  
Carolina.Vieira@ilac.com



Sayaka Homestay (Vancouver)  
sayaka.mizoguchi@ilac.com



Elena Homestay (Vancouver)  
elena.suleymanova@ilac.com

# Accommodation Options

## Homestay

### Single Room Homestay:

- 1 student in a private room living with a host family
- Includes 3 meals per day, 7 days a week
- Available Internet
- C\$215 per week

### Twin Room Homestay:

- 2 students of the same gender and different native language share a room with a host family
- Includes 3 meals per day, 7 days a week
- Available Internet
- C\$190 per week

### What to expect in a Homestay

- Host families may come from different backgrounds
- Two or more international students may live in the same homestay
- Self-serve breakfast
- Self-serve packed lunch
- Hot dinner

## Residence

- Residences rooms are limited and should be booked at least 2-3 months in advance
- Can be reserved in increments of 4 weeks
- All residences have private rooms

### What to expect in a Residence

- Private room with shared bathroom
- Meals are not included
- Safe — most residences provide 24 hour security

## Airport Pick-up & Drop-off Service

An ILAC representative will greet you and pick you up at the airport. Airport drop-off service is also available and can be arranged in Canada.





Vitto  
vitto@ilac.com

# ILAC Toronto Activities

ILAC believes that social activities are key to learning English quickly and efficiently.

Casa Loma



Canoeing



Art Gallery

Montreal



Baseball Game



# Have fun while learning English!



Niagara Falls

## Famous Landmarks, Trips & Special Events

- CN Tower
- Niagara Falls
- Algonquin Park
- Montreal
- Ottawa
- Quebec
- New York City
- Toronto Zoo
- Canada's Wonderland
- Basketball games
- Football games
- Hockey games
- Baseball games

### Museums

- Ontario Science Centre
- Royal Ontario Museum
- Art Gallery of Ontario
- Parliament Building
- Casa Loma
- Bata Shoe Museum

### Sports & Leisure

- Soccer
- Baseball
- Beach Volleyball
- Canoeing
- Camping
- Boat Cruise
- Bowling

### Discovery Walks

- High Park
- Toronto Island
- Distillery District
- Chinatown



Royal Ontario Museum



Canada's Wonderland



Algonquin Park



Toronto Island



Toronto Zoo



Andrea  
andrea.bianchi@ilac.com

# ILAC Vancouver Activities





# We Work Hard to Make Learning Fun



Snowboarding



Camping



Whistler Trip

### Museums

- Vancouver Aquarium
- Museum of Anthropology
- Vancouver Art Gallery

### Discovery Walks

- Stanley Park
- Gastown + Lookout Tower
- Chinatown
- Queen Elizabeth Park
- Lynn Canyon

### Sports & Leisure

- Snowboarding & Skiing
- Wakeboarding
- Sailing
- Soccer
- Camping
- Kayaking
- Rafting
- Baseball
- Beach Volleyball
- Cycling at Stanley Park



English Bay



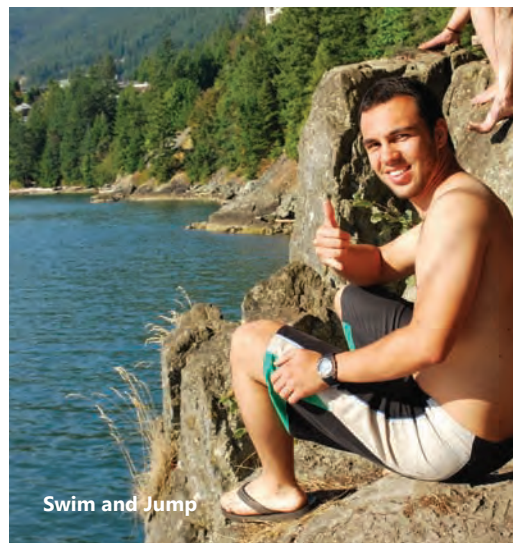
Aquarium



Whale Watching

### Famous Landmarks, Trips & Special Events

- Whistler
- Victoria
- Rocky Mountains
- Whale Watching
- Tofino Surfing
- Seattle Outlet
- Las Vegas
- Summer Festival
- Granville Island + Kitsilano Beach
- Graduation Parties & Barbeques
- Multicultural Festival
- University Tours
- Capilano Bridge
- Sunset Parties
- Playland
- English Bay
- Roosters Cowboy Party
- Fireworks Festival
- Cloverdale Rodeo
- Halloween Party
- Hockey Games
- Football games



Swim and Jump

# Fees

Choose your course length  
Tuition fee = # weeks x price per week

\*All fees are in Canadian dollars and are due before the program start date

## English Programs for Adults

	Course Length	Intensive English Program (30 lessons/week) Weekly fee	Power English Program (38 lessons/week) Weekly fee
General English	1 - 10 weeks	\$320	\$380
Cambridge English (FCE)	11 - 21 weeks	305	365
Cambridge English (CAE)	22 - 32 weeks	290	345
TOEFL Preparation	33 - 43 weeks	275	325
IELTS Preparation	44 + weeks	265	315
Business English			
University Pathway Program			

## TESOL Programs

	Course Length	Course fee
International TESOL Certificate	4 week course fee	\$990 (textbook included)

## GMAT Preparation

	GMAT Prep Course Fee	or	GMAT Prep Course with 3 hours of private tutoring Fee
Graduate Management Admission Test	\$1599		\$2058

## Study & Work Program\*

	Course length	Course fee
Professional Internship Hospitality & Retail Placement	8 - 24 weeks	\$1,200

\* Maximum 50% of program length

## High School Year

	Course length (40 weeks)	Course fee
Grade 12 or Grade 11	10 Courses	\$ 13,000
	Additional Courses	1,300

## Accommodation

	Weekly fee
Homestay Single (Adult) - with 3 meals/day	\$215
Homestay Twin (Adult) - with 3 meals/day	190
Homestay High Season Supplement for weeks of June 23 - August 4	25
Residence by request	For fees and availability please contact your agent or email us

## Other Fees

Program Registration Fee	\$120
Program Registration Fee (High Season - June and July)	200
Accommodation Placement Fee (One-time fee)	190
Airport Pick-up	100
Airport Drop-off	70
Health Insurance (per week)	15
Custodianship Letter	150

# Policies

## Agreement and Medical Authorization

I do waive and release all claims against ILAC for any injury, loss, damage, accident, delay, and expenses resulting from my participation in the program.

I release and agree to indemnify ILAC with regard to any financial obligations or liabilities that I may personally incur or any damage or injury to the person or property of others that I may cause while participating in the program. I also understand that ILAC is not responsible for any injury or loss suffered or caused by me while away from the school for any reason.

If I become ill, injured or incapacitated, ILAC, the host family, or the local coordinator may take such actions as any of them considers necessary, including medical treatment for me and transporting me back to my country, at my own expense. I understand that my participation at ILAC and in the accommodation program may be terminated at the sole discretion of ILAC without a refund of fees and that I may be sent home at my expense if I do not adhere to these rules, standards and instructions. I agree that Canadian law shall apply to this agreement and I agree to submit to the jurisdiction of Canadian law. I agree to pay promptly all telephone bills charged by me to the host family phone in case I did not use a pre-paid phone card. I agree to a minimum stay of 4 weeks, and to advise the homestay coordinator at least 2 weeks before I plan to leave.

I understand that medical insurance is mandatory while attending ILAC; if I don't purchase it from ILAC, I will purchase my own insurance from a different provider.

## Withdrawal Policy

### IF YOU ARE DENIED A VISA:

You are entitled to receive a FULL REFUND (less program registration fee and all bank transfer charges) if you are unable to obtain lawful entry to Canada for the purpose of studying at ILAC.

You must provide the letter from the Canadian Embassy stating that your Visa to enter Canada was denied.

Students who have applied through an agent must contact the agent for a refund.

### ONCE YOU RECEIVE AN ENTRY VISA OR IF AN ENTRY VISA IS NOT REQUIRED:

To withdraw from the program at ILAC, you must first provide a written letter including a sufficient reason for withdrawing. You must demonstrate that your stay in Canada is lawful or that you will be leaving the country. ILAC will require proof that you are attending another school that meets the visa requirement, and ILAC will require proof that your Visa status is lawful. If you have a student visa, you will have to re-apply for a new Visa. Students who have applied through an agent must contact the agent for a refund.

ILAC will require proof that you are leaving the country early by showing a photocopied plane ticket. Once you have started studying, the first 4 weeks of your tuition and homestay are non-refundable. Please note that refunds may take up to 8 weeks to process. There are no refunds for students changing programs.

Students who have obtained their visa with the help of a letter of acceptance from ILAC and a conditional letter of acceptance and/or supporting letter to a Pathway Program institution will be expected to complete their English language training at ILAC and not be eligible for a refund.

Refunds are calculated based on the unused portion of your tuition (regular brochure prices will be charged for the used portion) according to the table below: (For the accommodation portion, ILAC requires at minimum a 2-week written notice for any changes, cancellations, or postponements. Otherwise a 2 week accommodation fee will be applicable and the homestay placement fee is not refundable).

From 2 weeks prior to start date up to 10% of course completed	60% refund
Up to 30% of course completed	40% refund
After 30% of course completed	NO refund



## Take our Online Test

- [www.ilac.com/onlinetest](http://www.ilac.com/onlinetest)
- Take our Online Test to determine your English level. This will help you plan your program length.
- After you take the test, contact [info@ilac.com](mailto:info@ilac.com)





# How to Register

## 1 Choose your program intensity, course focus & accommodation

General English  
Exam Preparation  
Business English  
TESOL  
University Pathway Programs  
GMAT Preparation  
Internship  
High School Year



## 2 Complete application form (four options):

1. Online at [www.ilac.com/register](http://www.ilac.com/register) or
2. Fax application to +1 (416) 961-5988 or +1 (416) 961-9267 or
3. Email our Educational Planner at [info@ilac.com](mailto:info@ilac.com) or
4. Register through an ILAC Agent in your country



## 3 Send your Deposit

Send a deposit of \$2,000 (CAD\$ or US\$) by Bank Wire (bank details on next page) to International Language Academy of Canada or make an online payment by credit card. Your deposit will be applied against your tuition fees.



## 4 Letter of Acceptance

Upon receipt of payment, you will be sent a Letter of Acceptance which you will need to obtain your student or tourist entry visa



## 5 Balance is due

Once you obtain your student or tourist entry visa, the balance of your fees are due

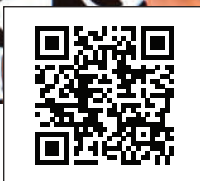
### For more information Please contact us at:

Tel: +1(416) 961.5151

Skype toll free: 1(877) 452.2452

Email: [info@ilac.com](mailto:info@ilac.com)

Web: [www.ilac.com](http://www.ilac.com)



# Bank Information

All bank details must be included when making a bank transfer

## CANADIAN DOLLAR BANK ACCOUNT DETAILS

**Bank Name:** Royal Bank of Canada  
**Branch Name:** Yonge & Orchardview Branch  
**Branch Address:** 2346 Yonge Street, Toronto, ON, M4P 2W7, Canada  
**Transit Number (Bank Code):** 003  
**Branch Number:** 06722  
**Account Number:** 1010057  
**Beneficiary Name:** International Language Academy of Canada  
**Beneficiary Address:** 920 Yonge Street, 4<sup>th</sup> Floor, Toronto, ON, M4W 3C7, Canada  
**Swift BIC:** ROYCCAT2

**Please include:**

- Student name and student number
- Name of agent (If an agent is paying)

**IMPORTANT**

1. Please include all bank information exactly as above to be sure that your wire is received by the school
2. Please include name of agent (if applicable), name of student and student number
3. All banking charges are the responsibility of the sender
4. Please specify that "International Language Academy of Canada" is the BENEFICIARY ACCOUNT for all wires
5. All school fees are due before the program start date

## US DOLLAR BANK ACCOUNT DETAILS

**Bank Name:** Royal Bank of Canada  
**Branch Name:** Yonge & Orchardview Branch  
**Branch Address:** 2346 Yonge Street, Toronto, ON, M4P 2W7, Canada  
**Transit Number (Bank Code):** 003  
**Branch Number:** 06722  
**Account Number:** 4002366  
**Beneficiary Name:** International Language Academy of Canada  
**Beneficiary Address:** 920 Yonge Street, 4<sup>th</sup> Floor, Toronto, ON, M4W 3C7, Canada  
**Swift BIC:** ROYCCAT2

**Please include:**

- Student name and student number
- Name of agent (If an agent is paying)

**IMPORTANT**

1. Please include all bank information exactly as above to be sure that your wire is received by the school
2. Please include name of Agent (if applicable), name of student and student number
3. All banking charges are the responsibility of the sender
4. Please specify that "International Language Academy of Canada" is the BENEFICIARY ACCOUNT for all wires
5. All school fees are due before the program start date

# Registration Form

## Student Information

Mr.  Ms.  Nationality: \_\_\_\_\_ Passport#: \_\_\_\_\_  
 Last Name: \_\_\_\_\_ First Name: \_\_\_\_\_ Date of Birth: \_\_\_\_\_  
YYYY / MM / DD  
 Home Address: \_\_\_\_\_ City: \_\_\_\_\_ Province: \_\_\_\_\_  
 Country: \_\_\_\_\_ Email: \_\_\_\_\_ Telephone: \_\_\_\_\_

## Agent Information

Agency: \_\_\_\_\_ Contact Person: \_\_\_\_\_ Email: \_\_\_\_\_

## Arrival Information

Arrival Date: \_\_\_\_\_ Airport Pick-up Yes  No   
 Flight Information: \_\_\_\_\_ Airport Drop-off Yes  No

### School Campus

Toronto  Vancouver

## Accommodation

Homestay (HS)  Residence (RS)  No Accommodation   
 Length Weeks: \_\_\_\_\_  
 Type: Single HS  Twin HS   
 Specify Residence: \_\_\_\_\_

We would like to make your homestay experience as comfortable as possible.  
 Please let us know if you have any special requests/preferences:

\_\_\_\_\_  
 \_\_\_\_\_  
 \_\_\_\_\_

*We will do our best to accommodate your requests; however, due to availability, we cannot guarantee that your requests will be granted.*

## Medical Information

Please note: It is mandatory for ILAC students to have Medical Insurance during their stay in Canada

Do you have Medical Insurance? Yes  No   
 Policy No.: \_\_\_\_\_ Start Date: \_\_\_\_\_ End Date: \_\_\_\_\_  
 If not, will you buy it at ILAC? Yes  No   
 Do you have any allergies? yes  No  If yes, please list them: \_\_\_\_\_  
 Do you have any medical problems? Yes  No  If yes, please list them: \_\_\_\_\_  
 Do you have any food restrictions? Yes  No  If yes, please list them: \_\_\_\_\_  
 Do you smoke? Yes  No

Canada is mostly a smoke-free environment, but you are permitted to smoke outdoors

Program Focus  Power English  Intensive English

Course Focus Choose as many courses below as you wish

- General English  Pre-Degree II  
 Cambridge (FCE & CAE)  Pre-Degree III Certificate  
 TOEFL Preparation  High School Year  
 IELTS Preparation  TESOL Certificate/Diploma  
 Business English  GMAT Preparation  
 Pre-Degree I  Internship Program

Other Program: \_\_\_\_\_

Start Date: \_\_\_\_\_ Weeks of Study: \_\_\_\_\_  
YYYY / MM / DD

## Program Fees

Tuition Fee*		\$	
Registration Fee (non-refundable)	\$120	\$	
Registration Fee (High Season - June and July)	\$200	\$	
Accommodation Placement Fee	\$190	\$	
Homestay Accommodation Fee		\$	
Medical Insurance (per week)	\$15	\$	
Airport Pick-up (one way)	\$100	\$	
Airport Drop-off (one way)	\$70	\$	
Homestay High Season Supplement (per week)	\$25	\$	
<b>Total</b>			

**\*Textbooks and Materials not included**

*I hereby certify that the above information is true and complete. I agree with and accept the policies shown on bottom of page 34. I understand that any false or incomplete information submitted in support of my registration may invalidate my registration. I agree to speak only English on School property and at all school events. If the applicant is less than 18 years old, please have a parent co-sign below.*

Applicant signature: \_\_\_\_\_

Date: \_\_\_\_\_  
YYYY / MM / DD

Co-applicant signature: \_\_\_\_\_

Date: \_\_\_\_\_  
YYYY / MM / DD



# 2013 Start Dates

START DATE EVERY OTHER MONDAY

■ Main Start Dates □ Alternate Start Dates

\* ■ \* □ Regular Classes will be closed on these Start Dates however Orientation will take place

<h3>January</h3> <table border="1"> <tr><th>SUN</th><th>MON</th><th>TUE</th><th>WED</th><th>THU</th><th>FRI</th><th>SAT</th></tr> <tr><td></td><td>31</td><td>1</td><td>2</td><td>3</td><td>4</td><td>5</td></tr> <tr><td>6</td><td>7</td><td>8</td><td>9</td><td>10</td><td>11</td><td>12</td></tr> <tr><td>13</td><td>14</td><td>15</td><td>16</td><td>17</td><td>18</td><td>19</td></tr> <tr><td>20</td><td>21</td><td>22</td><td>23</td><td>24</td><td>25</td><td>26</td></tr> <tr><td>27</td><td>28</td><td>29</td><td>30</td><td>31</td><td></td><td></td></tr> </table>	SUN	MON	TUE	WED	THU	FRI	SAT		31	1	2	3	4	5	6	7	8	9	10	11	12	13	14	15	16	17	18	19	20	21	22	23	24	25	26	27	28	29	30	31			<h3>February</h3> <table border="1"> <tr><th>SUN</th><th>MON</th><th>TUE</th><th>WED</th><th>THU</th><th>FRI</th><th>SAT</th></tr> <tr><td></td><td></td><td></td><td></td><td></td><td>1</td><td>2</td></tr> <tr><td>3</td><td>4</td><td>5</td><td>6</td><td>7</td><td>8</td><td>9</td></tr> <tr><td>10</td><td>11</td><td>12</td><td>13</td><td>14</td><td>15</td><td>16</td></tr> <tr><td>17</td><td>18</td><td>19</td><td>20</td><td>21</td><td>22</td><td>23</td></tr> <tr><td>24</td><td>25</td><td>26</td><td>27</td><td>28</td><td></td><td></td></tr> </table>	SUN	MON	TUE	WED	THU	FRI	SAT						1	2	3	4	5	6	7	8	9	10	11	12	13	14	15	16	17	18	19	20	21	22	23	24	25	26	27	28			<h3>March</h3> <table border="1"> <tr><th>SUN</th><th>MON</th><th>TUE</th><th>WED</th><th>THU</th><th>FRI</th><th>SAT</th></tr> <tr><td></td><td></td><td></td><td></td><td></td><td>1</td><td>2</td></tr> <tr><td>3</td><td>4</td><td>5</td><td>6</td><td>7</td><td>8</td><td>9</td></tr> <tr><td>10</td><td>11</td><td>12</td><td>13</td><td>14</td><td>15</td><td>16</td></tr> <tr><td>17</td><td>18</td><td>19</td><td>20</td><td>21</td><td>22</td><td>23</td></tr> <tr><td>24</td><td>25</td><td>26</td><td>27</td><td>28</td><td>29</td><td>30</td></tr> <tr><td>31</td><td></td><td></td><td></td><td></td><td></td><td></td></tr> </table>	SUN	MON	TUE	WED	THU	FRI	SAT						1	2	3	4	5	6	7	8	9	10	11	12	13	14	15	16	17	18	19	20	21	22	23	24	25	26	27	28	29	30	31							<h3>April</h3> <table border="1"> <tr><th>SUN</th><th>MON</th><th>TUE</th><th>WED</th><th>THU</th><th>FRI</th><th>SAT</th></tr> <tr><td></td><td>1</td><td>2</td><td>3</td><td>4</td><td>5</td><td>6</td></tr> <tr><td>7</td><td>8</td><td>9</td><td>10</td><td>11</td><td>12</td><td>13</td></tr> <tr><td>14</td><td>15</td><td>16</td><td>17</td><td>18</td><td>19</td><td>20</td></tr> <tr><td>21</td><td>22</td><td>23</td><td>24</td><td>25</td><td>26</td><td>27</td></tr> <tr><td>28</td><td>29</td><td>30</td><td></td><td></td><td></td><td></td></tr> </table>	SUN	MON	TUE	WED	THU	FRI	SAT		1	2	3	4	5	6	7	8	9	10	11	12	13	14	15	16	17	18	19	20	21	22	23	24	25	26	27	28	29	30									
SUN	MON	TUE	WED	THU	FRI	SAT																																																																																																																																																																																	
	31	1	2	3	4	5																																																																																																																																																																																	
6	7	8	9	10	11	12																																																																																																																																																																																	
13	14	15	16	17	18	19																																																																																																																																																																																	
20	21	22	23	24	25	26																																																																																																																																																																																	
27	28	29	30	31																																																																																																																																																																																			
SUN	MON	TUE	WED	THU	FRI	SAT																																																																																																																																																																																	
					1	2																																																																																																																																																																																	
3	4	5	6	7	8	9																																																																																																																																																																																	
10	11	12	13	14	15	16																																																																																																																																																																																	
17	18	19	20	21	22	23																																																																																																																																																																																	
24	25	26	27	28																																																																																																																																																																																			
SUN	MON	TUE	WED	THU	FRI	SAT																																																																																																																																																																																	
					1	2																																																																																																																																																																																	
3	4	5	6	7	8	9																																																																																																																																																																																	
10	11	12	13	14	15	16																																																																																																																																																																																	
17	18	19	20	21	22	23																																																																																																																																																																																	
24	25	26	27	28	29	30																																																																																																																																																																																	
31																																																																																																																																																																																							
SUN	MON	TUE	WED	THU	FRI	SAT																																																																																																																																																																																	
	1	2	3	4	5	6																																																																																																																																																																																	
7	8	9	10	11	12	13																																																																																																																																																																																	
14	15	16	17	18	19	20																																																																																																																																																																																	
21	22	23	24	25	26	27																																																																																																																																																																																	
28	29	30																																																																																																																																																																																					
<h3>May</h3> <table border="1"> <tr><th>SUN</th><th>MON</th><th>TUE</th><th>WED</th><th>THU</th><th>FRI</th><th>SAT</th></tr> <tr><td></td><td></td><td></td><td>1</td><td>2</td><td>3</td><td>4</td></tr> <tr><td>5</td><td>6</td><td>7</td><td>8</td><td>9</td><td>10</td><td>11</td></tr> <tr><td>12</td><td>13</td><td>14</td><td>15</td><td>16</td><td>17</td><td>18</td></tr> <tr><td>19</td><td>20</td><td>21</td><td>22</td><td>23</td><td>24</td><td>25</td></tr> <tr><td>26</td><td>27</td><td>28</td><td>29</td><td>30</td><td>31</td><td></td></tr> </table>	SUN	MON	TUE	WED	THU	FRI	SAT				1	2	3	4	5	6	7	8	9	10	11	12	13	14	15	16	17	18	19	20	21	22	23	24	25	26	27	28	29	30	31		<h3>June</h3> <table border="1"> <tr><th>SUN</th><th>MON</th><th>TUE</th><th>WED</th><th>THU</th><th>FRI</th><th>SAT</th></tr> <tr><td></td><td></td><td></td><td></td><td></td><td></td><td>1</td></tr> <tr><td>2</td><td>3</td><td>4</td><td>5</td><td>6</td><td>7</td><td>8</td></tr> <tr><td>9</td><td>10</td><td>11</td><td>12</td><td>13</td><td>14</td><td>15</td></tr> <tr><td>16</td><td>17</td><td>18</td><td>19</td><td>20</td><td>21</td><td>22</td></tr> <tr><td>23</td><td>24</td><td>25</td><td>26</td><td>27</td><td>28</td><td>29</td></tr> <tr><td>30</td><td></td><td></td><td></td><td></td><td></td><td></td></tr> </table>	SUN	MON	TUE	WED	THU	FRI	SAT							1	2	3	4	5	6	7	8	9	10	11	12	13	14	15	16	17	18	19	20	21	22	23	24	25	26	27	28	29	30							<h3>July</h3> <table border="1"> <tr><th>SUN</th><th>MON</th><th>TUE</th><th>WED</th><th>THU</th><th>FRI</th><th>SAT</th></tr> <tr><td></td><td>1</td><td>2</td><td>3</td><td>4</td><td>5</td><td>6</td></tr> <tr><td>7</td><td>8</td><td>9</td><td>10</td><td>11</td><td>12</td><td>13</td></tr> <tr><td>14</td><td>15</td><td>16</td><td>17</td><td>18</td><td>19</td><td>20</td></tr> <tr><td>21</td><td>22</td><td>23</td><td>24</td><td>25</td><td>26</td><td>27</td></tr> <tr><td>28</td><td>29</td><td>30</td><td>31</td><td></td><td></td><td></td></tr> </table>	SUN	MON	TUE	WED	THU	FRI	SAT		1	2	3	4	5	6	7	8	9	10	11	12	13	14	15	16	17	18	19	20	21	22	23	24	25	26	27	28	29	30	31				<h3>August</h3> <table border="1"> <tr><th>SUN</th><th>MON</th><th>TUE</th><th>WED</th><th>THU</th><th>FRI</th><th>SAT</th></tr> <tr><td></td><td></td><td></td><td></td><td></td><td>1</td><td>2</td><td>3</td></tr> <tr><td>4</td><td>5</td><td>6</td><td>7</td><td>8</td><td>9</td><td>10</td><td></td></tr> <tr><td>11</td><td>12</td><td>13</td><td>14</td><td>15</td><td>16</td><td>17</td><td></td></tr> <tr><td>18</td><td>19</td><td>20</td><td>21</td><td>22</td><td>23</td><td>24</td><td></td></tr> <tr><td>25</td><td>26</td><td>27</td><td>28</td><td>29</td><td>30</td><td>31</td><td></td></tr> </table>	SUN	MON	TUE	WED	THU	FRI	SAT						1	2	3	4	5	6	7	8	9	10		11	12	13	14	15	16	17		18	19	20	21	22	23	24		25	26	27	28	29	30	31	
SUN	MON	TUE	WED	THU	FRI	SAT																																																																																																																																																																																	
			1	2	3	4																																																																																																																																																																																	
5	6	7	8	9	10	11																																																																																																																																																																																	
12	13	14	15	16	17	18																																																																																																																																																																																	
19	20	21	22	23	24	25																																																																																																																																																																																	
26	27	28	29	30	31																																																																																																																																																																																		
SUN	MON	TUE	WED	THU	FRI	SAT																																																																																																																																																																																	
						1																																																																																																																																																																																	
2	3	4	5	6	7	8																																																																																																																																																																																	
9	10	11	12	13	14	15																																																																																																																																																																																	
16	17	18	19	20	21	22																																																																																																																																																																																	
23	24	25	26	27	28	29																																																																																																																																																																																	
30																																																																																																																																																																																							
SUN	MON	TUE	WED	THU	FRI	SAT																																																																																																																																																																																	
	1	2	3	4	5	6																																																																																																																																																																																	
7	8	9	10	11	12	13																																																																																																																																																																																	
14	15	16	17	18	19	20																																																																																																																																																																																	
21	22	23	24	25	26	27																																																																																																																																																																																	
28	29	30	31																																																																																																																																																																																				
SUN	MON	TUE	WED	THU	FRI	SAT																																																																																																																																																																																	
					1	2	3																																																																																																																																																																																
4	5	6	7	8	9	10																																																																																																																																																																																	
11	12	13	14	15	16	17																																																																																																																																																																																	
18	19	20	21	22	23	24																																																																																																																																																																																	
25	26	27	28	29	30	31																																																																																																																																																																																	
<h3>September</h3> <table border="1"> <tr><th>SUN</th><th>MON</th><th>TUE</th><th>WED</th><th>THU</th><th>FRI</th><th>SAT</th></tr> <tr><td>1</td><td>2</td><td>3</td><td>4</td><td>5</td><td>6</td><td>7</td></tr> <tr><td>8</td><td>9</td><td>10</td><td>11</td><td>12</td><td>13</td><td>14</td></tr> <tr><td>15</td><td>16</td><td>17</td><td>18</td><td>19</td><td>20</td><td>21</td></tr> <tr><td>22</td><td>23</td><td>24</td><td>25</td><td>26</td><td>27</td><td>28</td></tr> <tr><td>29</td><td>30</td><td></td><td></td><td></td><td></td><td></td></tr> </table>	SUN	MON	TUE	WED	THU	FRI	SAT	1	2	3	4	5	6	7	8	9	10	11	12	13	14	15	16	17	18	19	20	21	22	23	24	25	26	27	28	29	30						<h3>October</h3> <table border="1"> <tr><th>SUN</th><th>MON</th><th>TUE</th><th>WED</th><th>THU</th><th>FRI</th><th>SAT</th></tr> <tr><td></td><td></td><td>1</td><td>2</td><td>3</td><td>4</td><td>5</td></tr> <tr><td>6</td><td>7</td><td>8</td><td>9</td><td>10</td><td>11</td><td>12</td></tr> <tr><td>13</td><td>14</td><td>15</td><td>16</td><td>17</td><td>18</td><td>19</td></tr> <tr><td>20</td><td>21</td><td>22</td><td>23</td><td>24</td><td>25</td><td>26</td></tr> <tr><td>27</td><td>28</td><td>29</td><td>30</td><td>31</td><td></td><td></td></tr> </table>	SUN	MON	TUE	WED	THU	FRI	SAT			1	2	3	4	5	6	7	8	9	10	11	12	13	14	15	16	17	18	19	20	21	22	23	24	25	26	27	28	29	30	31			<h3>November</h3> <table border="1"> <tr><th>SUN</th><th>MON</th><th>TUE</th><th>WED</th><th>THU</th><th>FRI</th><th>SAT</th></tr> <tr><td></td><td></td><td></td><td></td><td></td><td>1</td><td>2</td></tr> <tr><td>3</td><td>4</td><td>5</td><td>6</td><td>7</td><td>8</td><td>9</td></tr> <tr><td>10</td><td>11</td><td>12</td><td>13</td><td>14</td><td>15</td><td>16</td></tr> <tr><td>17</td><td>18</td><td>19</td><td>20</td><td>21</td><td>22</td><td>23</td></tr> <tr><td>24</td><td>25</td><td>26</td><td>27</td><td>28</td><td>29</td><td>30</td></tr> </table>	SUN	MON	TUE	WED	THU	FRI	SAT						1	2	3	4	5	6	7	8	9	10	11	12	13	14	15	16	17	18	19	20	21	22	23	24	25	26	27	28	29	30	<h3>December</h3> <table border="1"> <tr><th>SUN</th><th>MON</th><th>TUE</th><th>WED</th><th>THU</th><th>FRI</th><th>SAT</th></tr> <tr><td>1</td><td>2</td><td>3</td><td>4</td><td>5</td><td>6</td><td>7</td></tr> <tr><td>8</td><td>9</td><td>10</td><td>11</td><td>12</td><td>13</td><td>14</td></tr> <tr><td>15</td><td>16</td><td>17</td><td>18</td><td>19</td><td>20</td><td>21</td></tr> <tr><td>22</td><td>23</td><td>24</td><td>25</td><td>26</td><td>27</td><td>28</td></tr> <tr><td>29</td><td>30</td><td>31</td><td></td><td></td><td></td><td></td></tr> </table>	SUN	MON	TUE	WED	THU	FRI	SAT	1	2	3	4	5	6	7	8	9	10	11	12	13	14	15	16	17	18	19	20	21	22	23	24	25	26	27	28	29	30	31																
SUN	MON	TUE	WED	THU	FRI	SAT																																																																																																																																																																																	
1	2	3	4	5	6	7																																																																																																																																																																																	
8	9	10	11	12	13	14																																																																																																																																																																																	
15	16	17	18	19	20	21																																																																																																																																																																																	
22	23	24	25	26	27	28																																																																																																																																																																																	
29	30																																																																																																																																																																																						
SUN	MON	TUE	WED	THU	FRI	SAT																																																																																																																																																																																	
		1	2	3	4	5																																																																																																																																																																																	
6	7	8	9	10	11	12																																																																																																																																																																																	
13	14	15	16	17	18	19																																																																																																																																																																																	
20	21	22	23	24	25	26																																																																																																																																																																																	
27	28	29	30	31																																																																																																																																																																																			
SUN	MON	TUE	WED	THU	FRI	SAT																																																																																																																																																																																	
					1	2																																																																																																																																																																																	
3	4	5	6	7	8	9																																																																																																																																																																																	
10	11	12	13	14	15	16																																																																																																																																																																																	
17	18	19	20	21	22	23																																																																																																																																																																																	
24	25	26	27	28	29	30																																																																																																																																																																																	
SUN	MON	TUE	WED	THU	FRI	SAT																																																																																																																																																																																	
1	2	3	4	5	6	7																																																																																																																																																																																	
8	9	10	11	12	13	14																																																																																																																																																																																	
15	16	17	18	19	20	21																																																																																																																																																																																	
22	23	24	25	26	27	28																																																																																																																																																																																	
29	30	31																																																																																																																																																																																					

#### Main Start Dates

- Monday, December 31, 2012
- Monday, January 28, 2013
- Monday, February 25, 2013
- Monday, March 25, 2013
- Monday, April 22, 2013
- \*Monday, May 20, 2013
- Monday, June 17, 2013
- Monday, July 15, 2013
- Monday, August 12, 2013
- Monday, September 9, 2013
- Monday, October 7, 2013
- Monday, November 4, 2013
- Monday, December 2, 2013
- Monday, December 30, 2013

#### Alternate Start Dates

- Monday, January 14, 2013
- Monday, February 11, 2013
- Monday, March 11, 2013
- Monday, April 8, 2013
- Monday, May 6, 2013
- Monday, June 3, 2013
- \*Monday, July 1, 2013
- Monday, July 29, 2013
- Monday, August 26, 2013
- Monday, September 23, 2013
- Monday, October 21, 2013
- Monday, November 18, 2013
- Monday, December 16, 2013

#### Holiday Policy

Regular classes are closed on all of Canada's official holidays.  
 Regular classes in Toronto are closed on both of Toronto's official holidays (February 18 and December 26)  
 Regular classes in Vancouver are closed on Vancouver's official holiday (November 11)  
 \*When a Holiday is on a Monday, ILAC will be open for orientation of new students and will be closed for regular classes

#### Canadian Official Holidays

- Tuesday, January 1, 2013
- Monday, February 18, 2013
- Friday, March 29, 2013
- Monday, May 20, 2013
- Monday, July 1, 2013
- Monday, August 5, 2013
- Monday, September 2, 2013
- Monday, October 14, 2013
- Monday, November 11, 2013
- Wednesday, December 25, 2013
- Thursday, December 26, 2013
- New Year's Day
- Family Day - Toronto classes closed
- Easter (Good Friday)
- Queen Victoria Day
- Canada Day and ILAC's Birthday :) - Orientation open for new students, regular classes closed
- Civic Holiday
- Labour Day
- Thanksgiving
- Remembrance Day - Vancouver classes closed only
- Christmas Day
- Boxing Day - Toronto classes closed only

# See you at ILAC!



#### Toronto Campus

920 Yonge Street, 4<sup>th</sup> floor  
Toronto, ON, Canada, M4W 3C7  
Tel: +1 (416) 961.5151  
Fax: +1 (416) 961.9267

#### Vancouver Campus

688 West Hastings Street, 3<sup>rd</sup> floor  
Vancouver, BC, Canada, V6B 1P1  
Tel: +1 (604) 484.6660  
Fax: +1 (604) 484.6637

Skype Toll Free: 1 (877) 452.2452

---

General English • FCE Cambridge Preparation • CAE Cambridge Preparation  
TOEFL Preparation • IELTS Preparation • Business English  
TESOL Programs • University Pathway Program • GMAT Preparation  
High School Year Program • Internship Program

---

To learn more,  
please contact  
[info@ilac.com](mailto:info@ilac.com)

Accreditations and Memberships



[www.ilac.com](http://www.ilac.com) • [info@ilac.com](mailto:info@ilac.com)